

# USC Postdoctoral Association

Newsletter – Spring 2015

## USC Postdoctoral Association Executive Council for 2014-2015



**Dr. Timotei Centea, President**, is a postdoctoral research associate within the M.C. Gill Composites Center, Mork Family Department of Chemical Engineering and Material Science. He is investigating several aspects of the sustainable manufacturing of advanced aerospace materials.



**Dr. Jean Alupay, Vice-President**, is a postdoctoral scholar in Dornsife College. She is a marine biologist appointed in the linguistics department to study the dynamical principles of movement in muscular hydrostats like the octopus arm and human tongue.



**Dr. Gilly Koritzky, Treasurer**, is a postdoctoral research associate in the lab of Dr. Antoine Bechara at the Brain and Creativity Institute. Her research focuses on decision-making and other cognitive factors related to overeating and obesity.



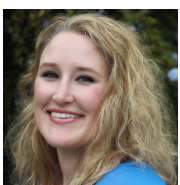
**Dr. Prapti Gautam, Secretary**, is a postdoctoral research associate in the Department of Psychology. She studies brain development and is interested in examining longitudinal change in brain metrics and how that relates to development of cognitive function over the lifespan.



**Dr. Lessa Grunenfelder, UPC Networking Chair** is an alumna of USC, who is excited to foster social and professional networking for postdocs. Lessa works in the M.C. Gill Composites Center (Dept of Chem Eng & Mat Sci), where her research focuses on processing efficiency for carbon fiber composites.



**Dr. Emily Barkley-Levenson, HSS Rep**, is a postdoctoral research associate in the department of psychology. She uses neuroimaging (fMRI) to look at risky decision-making in substance users and across adolescent development.



**Dr. Sarah Madsen, Professional Development Chair** is a neurology postdoctoral scholar research associate at the Imaging Genetics Center with the Institute for Neuroimaging and Informatics. She analyzes large databases of brain MRI scans to understand how we can keep our brains healthy into old age.



**Dr. Zlatka P. Stojanova** is the **Communications Chair** and a postdoctoral research associate in the Department of Stem Cells and Regenerative Medicine, where she studies novel approaches to hearing regeneration.



**Dr. Amanda Elson, CHLA Rep**, is a postdoctoral research associate at the Saban Research Institute of Children's Hospital Los Angeles. She has been investigating the impact of neonatal nutrition on the development of neural circuits that govern food intake and energy expenditure.

**VACANT**  
**HSC Networking Chair**  
Contact us at [uscpsda@usc.edu](mailto:uscpsda@usc.edu) to apply.

# USC Postdoctoral Association

Newsletter – Spring 2015

## Postdoctoral Scholars Training & Travel Award Recipients

**Congratulations to all winners!**

Hanmee Na Kim	Dornsife College of Letters, Arts & Sciences, Korean Studies Institute
Petra Thiemann	Dornsife Institute for New Economic Thinking
Marie-Victoire Guillot-Sestier	Keck School of Medicine
Shan Luo	USC
Allison Miller	Department of History
Hyunsung Oh	School of Social Work
George Villanueva	Annenberg School for Communications and Journalism
Tara Weitz	Keck School of Medicine
Timotei Centea	Viterbi School of Engineering
Lessa Grunenfelder	Viterbi School of Engineering

**The next application cycle will open in April 2015 for travel between June to December 2015.**

The Training and Travel grants are up to \$3,000 and are designed to enable postdocs to attend conferences and workshops or to learn new techniques or perform research at off-site locations.

The travel grants are co-sponsored by the **USC Office of Postdoctoral Affairs** and the **USC Postdoctoral Association**.

# USC Postdoctoral Association

Newsletter – Spring 2015

## Fall Social and Networking Events

### September 15-19

#### 5<sup>th</sup> Annual National Postdoc Appreciation Week

- ✧ **Seminar on Big Data** by Professor Arif Ansari
- ✧ **Outdoor Film Screening of Good Will Hunting** with In-N-Out Burger Truck
- ✧ **Taco Tuesday Lunch**
- ✧ **Communications Workshop** by Meghan McCarty (NPR Science Reporter)
- ✧ **Career Essentials Workshop** by Llewellyn Cox (Cofounder/CEO, LAb Launch)
- ✧ **Coffee Break & IDP Information:** Start the conversation with your mentor
- ✧ **Happy Hour**
- ✧ **Social & Lunch**
- ✧ **LA-wide Postdoc Family Picnic & Bonfire, Dockweiler Beach**

### October

- ✧ **Postdoc Success Stories: Translating Research into Industry Careers**, a joint event with the USC Stevens Center for Innovation
- ✧ **Careers in Regulatory Sciences**, a seminar presented by the USC Regulatory Science program.

### November

- ✧ **Teaching portfolios for the job market**, a workshop with the USC Center for Excellence in Teaching.

### December

- ✧ **Holiday party**

# USC Postdoctoral Association

Newsletter – Spring 2015

## Upcoming Events and Activities

This spring semester, the Postdoctoral Association will coordinate a wide variety of social, professional development and personal enrichment events, including:

- ✧ Happy hours and postdoc mixers (take a break and do some networking)
- ✧ A seminar series for postdocs, by postdocs
- ✧ Hikes throughout the greater LA metropolitan area
- ✧ Skill development workshops and training sessions

## Postdoctoral Forum Series (PDF)

The USC PDA would like to continue organizing its postdoc seminar series on both UPC and HSC. The idea is to bring postdocs together, learn about a range of topics, practice presenting to a diverse audience, and get feedback from peers outside of the usual research lab environment. The PDA will offer food and drinks if attendance warrants it. If you'd like to present at a PDF, please e-mail us at [uscpda@usc.edu](mailto:uscpda@usc.edu).

## Pint of Science US event in LA - First Event

We invite you to attend an outreach event, organized by one of our own USC postdocs.

**Pint of Science** is an international initiative designed to allow scientist to share their groundbreaking research over snacks and drinks.

Event Date: March 12<sup>th</sup> at 7pm-9pm

Cost: This is a free event. There is a \$5 deposit that will be refunded to you when you check-in

RSVP: <http://www.hamedmirzaei.org/events>

If you'd like to suggest – or, better yet, organize – an event, please contact us. The PDA can provide financial support for social or professional development events that involve a significant number of USC postdocs and contribute to postdoc life.

# USC Postdoctoral Association

Newsletter – Spring 2015

## Professional Development Tip

### How many Trojans are on LinkedIn?

#### Part 1

**Over 200,000 people have studied at USC and over 15,000 have worked at USC!**

*Do you know how to use LinkedIn to search for USC alumni near you who are in the your dream field? It's easy!* Follow the steps below. The USC alumni network is an incredible resource. (also remember to make use of alumni from your previous institutions, including graduate and undergraduate universities)

*Have you found a USC alumni who is working in the type of role that you are seeking? **Reach out!*** Ask to connect on LinkedIn with a short and sweet message. Be sure to mention your USC affiliation to establish some common ground and express your interest in learning about this career or their career path. If they accept your invitation to connect, you could suggest a short 15-20min meeting to grab coffee (your treat!) in their area.

#### Log into **LinkedIn**

Locate the **search bar** at the top of the page, select “People” from the drop down menu just to the left of the search bar, then lick on “Advanced” search (link to the right of the top search bar). This will take you to a new page

Enter in your **search criteria**, here is what we suggest for finding USC alumni in your area

**Keywords:** enter in something specific to the role that you are seeking or would like to learn more about (ex: “medical writing” or “consultant” or “sales” or “project manager” or “startup”)

(optional) **Title:** enter in a specific title if you like, this will narrow your search

(optional) **Company:** enter in a specific company if you like, this will narrow your search

**School:** University of Southern California

**Location:** in or near

**Country:** US

**Postal code:** enter your postal code (ex- 90089)

Click “Search” to **view your results!**

If you someone that is a 2<sup>nd</sup> connection, reach out to the connection that links you two together and ask for an introduction

**Remember: Don't be shy! Always be polite! And return the favor!**

# USC Postdoctoral Association

## Newsletter – Spring 2015

### Professional Development Tip

### How many Trojans are on LinkedIn?

### Part 2

The screenshot displays the LinkedIn Advanced People Search interface. At the top, the search bar shows "Search people..." and "Advanced" search options. The navigation bar includes "Home", "Profile", "Connections", "Education", "Jobs", "Interests", "Business Services", and "Try Premium". The search results page shows "374,320 results" and "Save search". The search filters are categorized into "People" and "Jobs". The "People" section includes filters for "Keywords" (with "medical writer" entered), "First Name", "Last Name", "Title", "Company", "School" (with "University of Southern Cali" entered), "Location" (with "Located in or near:" selected), "Country" (with "United States" selected), "Postal Code" (with "90089" entered and "Lookup" button), and "Within" (with "50 mi (80 km)" selected). The "Jobs" section includes filters for "Relationship" (with "1st Connections", "2nd Connections", and "Group Members" checked), "Location", "Current Company", "Industry", "Past Company", "School", "Profile Language", and "Nonprofit Interests". The "Upgrade to access multiple" section includes filters for "Groups" (with "Oxbridge Biotech Roundtable", "PhD Career Guide", "National Defense Science and Engineering ...", "Lab Launch Inc.", and "USC Postdoctoral Association" listed), "Years of Experience", "Function", "Seniority Level", "Interested In", "Company Size", "Fortune", and "When Joined". The search results are displayed as a list of profiles, including "Dana Chahremani" (Research Faculty at UCLA), "Karen Crawford" (MIS Manager at University of Southern California), and "Zornitsa Kozarova" (Senior Research Scientist at Yahoo).

# USC Postdoctoral Association

Newsletter – Spring 2015

## Volunteers needed

### The Office of Undergraduate Programs is seeking postdoc judges for the 17<sup>th</sup> Annual Undergraduate Symposium for Scholarly and Creative Work.

Undergraduates from across the University will be displaying projects in five categories: Arts, Humanities, Life Sciences, Physical Sciences and Engineering, and Social Sciences. Each category will be judged by a panel led by a faculty member and composed of postdoctoral associates and senior graduate students.

The judging process has two components:

- ✧ Tuesday, April 14, students set up their projects for closed judging. The Judges will browse through the projects while students are not present (8.30am-5pm).
- ✧ Wednesday, April 15, students check-in and Judges stop by each project in their assigned category to interview the students (11am-2pm). Shortly after 2pm the Judges convene in their panels to select prize winners.
- ✧ The Judges are invited to attend the Awards Banquet at the Radisson Hotel at 6pm on the evening of April 15, although this is not required.
- ✧ Each judge will receive a **\$50 USC Bookstore gift certificate**

**When:** April 14<sup>th</sup> and 15<sup>th</sup>

**Where:** Ronald Tutor Hall Campus Center Ballroom

**Contact:** David Glasgow at [dglasgow@Provost.usc.edu](mailto:dglasgow@Provost.usc.edu)

**Information:** <http://www.usc.edu/programs/ugprograms/ugsymposium/>

# USC Postdoctoral Association

Newsletter – Spring 2015

## Join the USC Postdoctoral Association!

### HSC Networking Chair

The position of **HSC Networking Chair** is currently open on the PDA's Executive Council! If you are passionate about engaging with the postdoc community, collaborating with colleagues and the administration and taking ownership of interesting, challenging projects, e-mail us at [uscpda@usc.edu](mailto:uscpda@usc.edu) with your nomination.

### Committee Members and Representatives

The USC PDA is inviting enthusiastic, engaged postdocs to serve as committee members or as representatives to various constituencies on campus. E-mail us at [uscpda@usc.edu](mailto:uscpda@usc.edu) to find out more.



# USC Postdoctoral Association

Newsletter – Spring 2015

## Resources

### USC PDA website

Check out our new website to stay current with all events (career oriented or just for fun), grants and awards, and learn more about what PDA could offer. [pda.usc.edu](http://pda.usc.edu)

### Postdoc Hub

Check out the **Postdoc HUB**, the one-stop-shop (web resource page) for USC postdocs!

[USC Postdoc Hub](#)

### Find us on LinkedIn

Stay in touch via LinkedIn (**USC Postdoctoral Association**) for events, professional development tips and discussion. [LinkedIn](#)

### LA Postdoc Community Facebook Group

Join the Facebook group that brings together postdocs from all institutions in the LA area! Co-administered by the USC, UCLA, Cedars-Sinai, City of Hope and CalTech PDAs, it will be used to advertise city-wide social and networking events, hikes, and items of interest to postdocs. We also hope to make it a useful forum for creating professional and personal networks with peers. [Facebook](#)

**Subscribe to our email list to receive news about grants, events and volunteer opportunities**

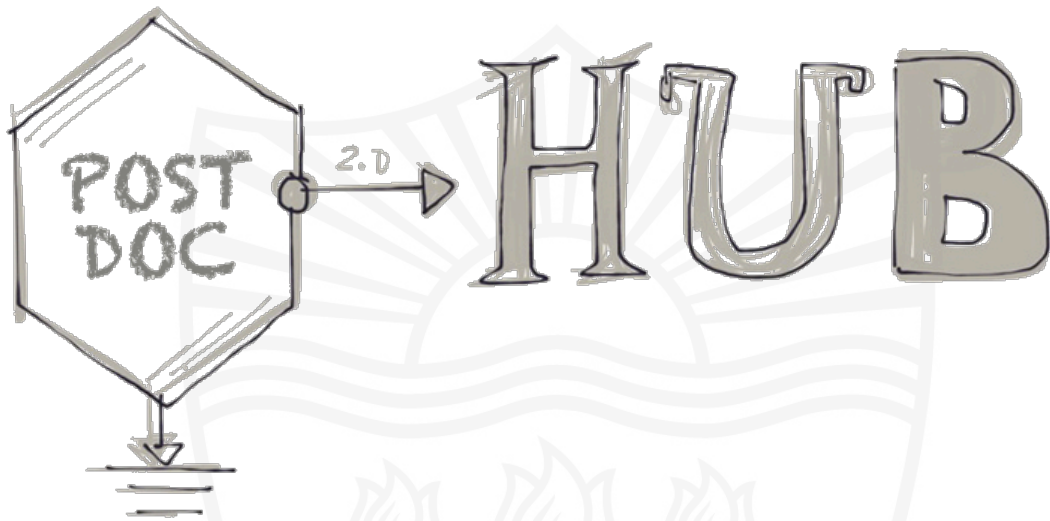
<http://eepuurl.com/624JP>

### Have any questions?

Send us an email [uscpsda@usc.edu](mailto:uscpsda@usc.edu)

# USC Postdoctoral Association

Newsletter – Spring 2015



Visit the Postdoc Hub for information on news, resources and programming information related to the postdoc experience.

<https://uscpostdochub.usc.edu/>